

SYCSA[®]



HOPPERTOP

Weigh Hopper Venting
Filter



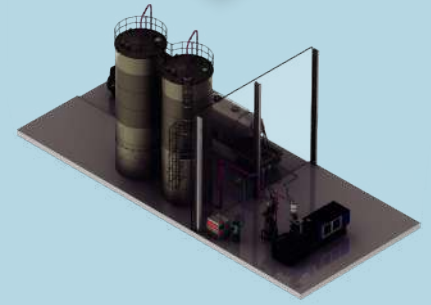
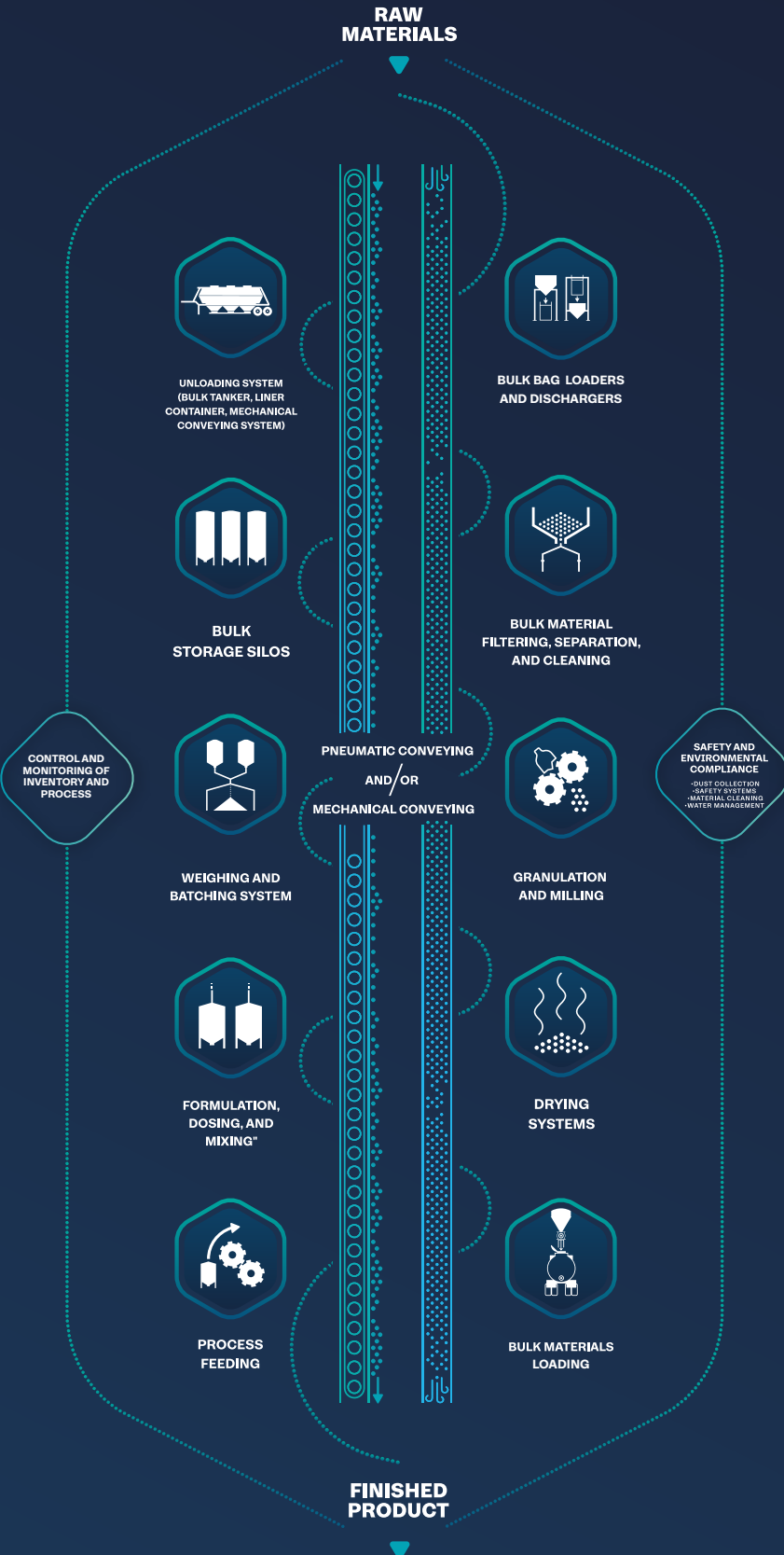
WAM[®]

SYCSA[®] AUTHORIZED REPRESENTATIVE

BULK MATERIAL HANDLING SOLUTIONS

We just don't sell you a product

SYCSA® accompanies you through **all the phases** of your project



DESIGN



INSTALLATION



AUTOMATION



BEFORE | AFTER

AFTER-SALES SERVICE

HOPPERTOP

Weigh Hopper Venting

THE TOP CHOICE FOR HOPPER VENTING IN CONCRETE PLANTS

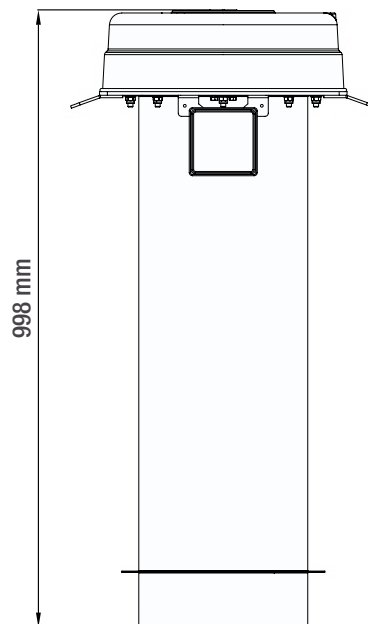
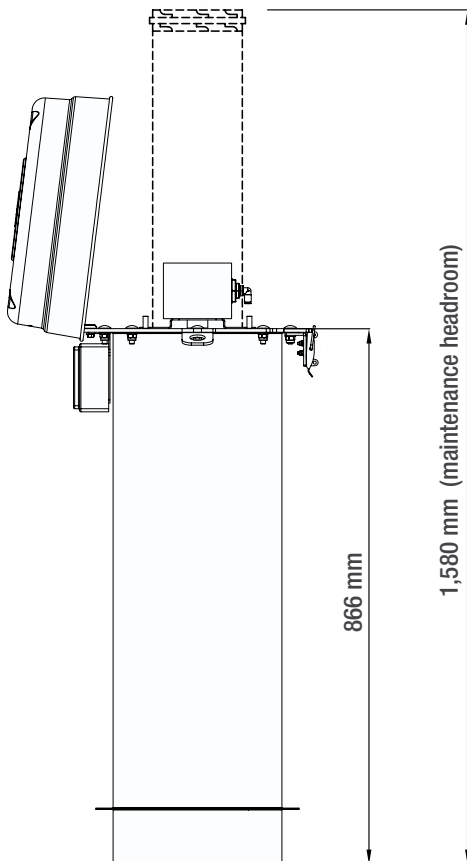
HOPPERTOP is a COMPACT air filter specially developed for venting of mechanically loaded cement weigh hoppers in concrete plants.

Dust which is separated from the air flow by a single patented WAM® cartridge filter element drops back into the hopper after an integrated automatic reverse air jet cleaning system inside the weather protection cover has removed the dust particles from the filter elements.

Features

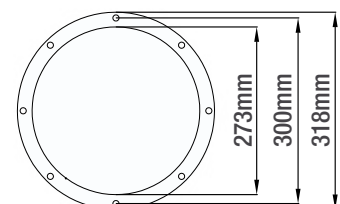
- Compact dimensions
- Stainless steel design
- Hinged cover
- High-performance quality filter cartridge
- Cartridge removal without tools

Overall Dimensions



| MODEL | TYPE | FILTER SURFACE (m ²) |
|-----------|-------------------|----------------------------------|
| HTP10001V | VENTING | 1 |
| HTP10001R | FLANGE CONNECTION | 1 |

BOTTOM FLANGE



Benefits



Maintenance height:
870mm



Durable stainless steel
design



Easy maintenance
thanks to hinged top
cover and cartridge
removal without tools



15 Kg



Small footprint, easy to
handle



Durable thanks to
special cartridge pleat
geometry



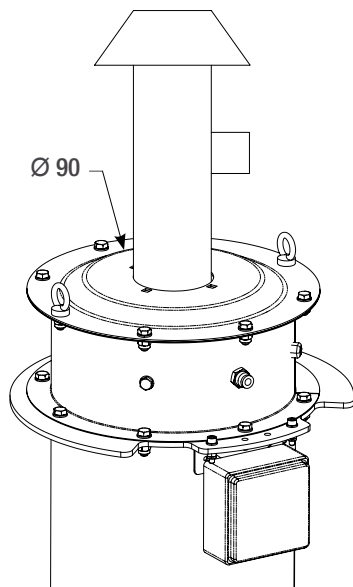
EMISSION LEVEL
< 10 mg/Nm³

High-efficiency
filter media compliant
with international dust
emission directives

Accessories

Pipe Connection Module

- Required for dust emission sampling connection or suction duct
- Robust powder-coated steel cover
- Easy replacement with weather protection cover



Electronic Differential Pressure Meter



- Filter ΔP continuously measured and displayed on 3-digit display;
- Cleaning activation through pressure threshold;
- Alarm pressure can switch on external device;
- 4-20 mA exit to read ΔP value on plant PLC;
- Possible to retrofit on existing filters.

LOADING AND UNLOADING EQUIPMENT

- Liners loading and unloading systems
- Railroad loading system
- Truck loading system (telescopic spouts) (loading bellows)
- Pumping system and preparation tank
- Reclaim system and sweep
- Manual or automatic bag opener
- Manual or automatic big bag unloaders
- Manual or automatic big bag loaders
- Bagging machine
- Palletizer

STORAGE

- Bolted silo
- Welded silo
- Water tank
- Silos and pressurized vessels
- Hopper
- Fabric silo

MATERIAL FILTERING AND CLEANING

- Venting filters
- Filter receiver
- Dust collectors
- Magnetic Separation and Metal Detection
- Non-ferrous material detectors
- Gravity and in-line screens
- Lump breaker
- Pellet deduster (fine separator)

SECURITY SYSTEMS

- Lightning protection system
- Vacuum and pressure relief valves
- Explosion vent
- Explosion isolation safety valve
- Flameless venting
- Temperature, pressure and humidity monitoring and control system
- Silo or hopper overfilling systems
- Truck unloading locking system
- Metal detector
- Explosion isolation systems

PNEUMATIC CONVEYING

- Dilute phase conveying
- Dense phase conveying
- Blowers
- Blower packages
- Dense phase pneumatic vessel
- Dilute phase pneumatic vessel
- Vacuum and pressure pneumatic vessel
- Aero-slide conveyors

MECHANICAL CONVEYING

- Bucket elevator
- Screw conveyors & feeders
- Belt conveyor
- Drag conveyor
- Tubular cable & disc conveyor
- Discharge feeders (electromechanics and electromagnetics)
- Vibrating elevators

MIXING

- Centrifugal batch mixer
- Planetary mixer
- Single and double paddle mixer
- Sludge mixer
- Gravimetric mixer for plastic
- PVC mixer (mixing and cooling)
- Container mixer

DOSING AND MACHINE FEEDING

- Volumetric feeders
- Gravimetric feeders
- Additives or pigment dosing system
- Minor ingredients dosing system

VALVES

- Slide valve
- Diverter valve
- Gravity diverter valve
- Multipoint diverter valve
- Butterfly valve
- Iris valve
- Rotary valve for pneumatic conveying
- Rotary valve for dosing and locking
- Pinch valve
- Check valve

CONVEYOR LINE COMPONENTS

- Vacuum wands and sight glasses
- Gaskets
- Pipe or tubing and bends
- Tees, wyes, laterals, reductions and connections
- Cam and groove and quickie assemblies
- PVC and metallic hoses
- Pneumatic conveying manifold
- Take Off boxes

EQUIPMENT FOR EFFICIENT UNLOADING OF SILOS AND HOPPERS

- Bin activators
- Reclaim system & sweep conical and flat bottom
- Aeration systems
- Mechanical extractors
- Agitators
- Arch-breaker discharge & screw feeder
- Aeration bin bottoms

AUTOMATION CONTROL PANELS

- Industrial control panel
- Power panel & Control
- Remote monitoring panel
- Inventorying & control systems

MONITORING AND TRACEABILITY SYSTEMS

- Weighing silos and hoppers
- On-line weighing system
- Traceability and control systems
- Load cells
- Truck and railroad scales
- Solid and liquid level measurement
- Point level sensors
- Silos and tanks level sensors
- Liquids tanks level monitoring
- Energy monitoring and optimization
- Process optimization algorithms
- Process data historian

COMPLEMENTARY EQUIPMENT

- Self-contained vacuum loader
- Compressed air material loaders
- Air to air heat exchangers; for conveying air
- Gas cooling/heating
- PET crystallizing
- Deshumidifiers
- Drying & dehumidifying
- Central vacuum receivers
- Granulators
- Lump breaker
- Pneumatic vibrator
- Electric vibrator



The SYCSA logo is positioned in the top left corner. It features the word "SYCSA" in a bold, white, sans-serif font. A small registered trademark symbol (®) is located to the upper right of the letter "A". A thin red horizontal line is integrated into the bottom of the letter "A".

SYCSA®

www.sycsa.com

info@sycsa.com

Tel. +52 77 1717 09 00

Blvrd. Felipe Ángeles
1606, Santa Julia, 42080
Pachuca, Hgo., México

Engineering, construction,
automation and maintenance for
**production plants with
bulk material handling**