

**SYCSA<sup>®</sup>**



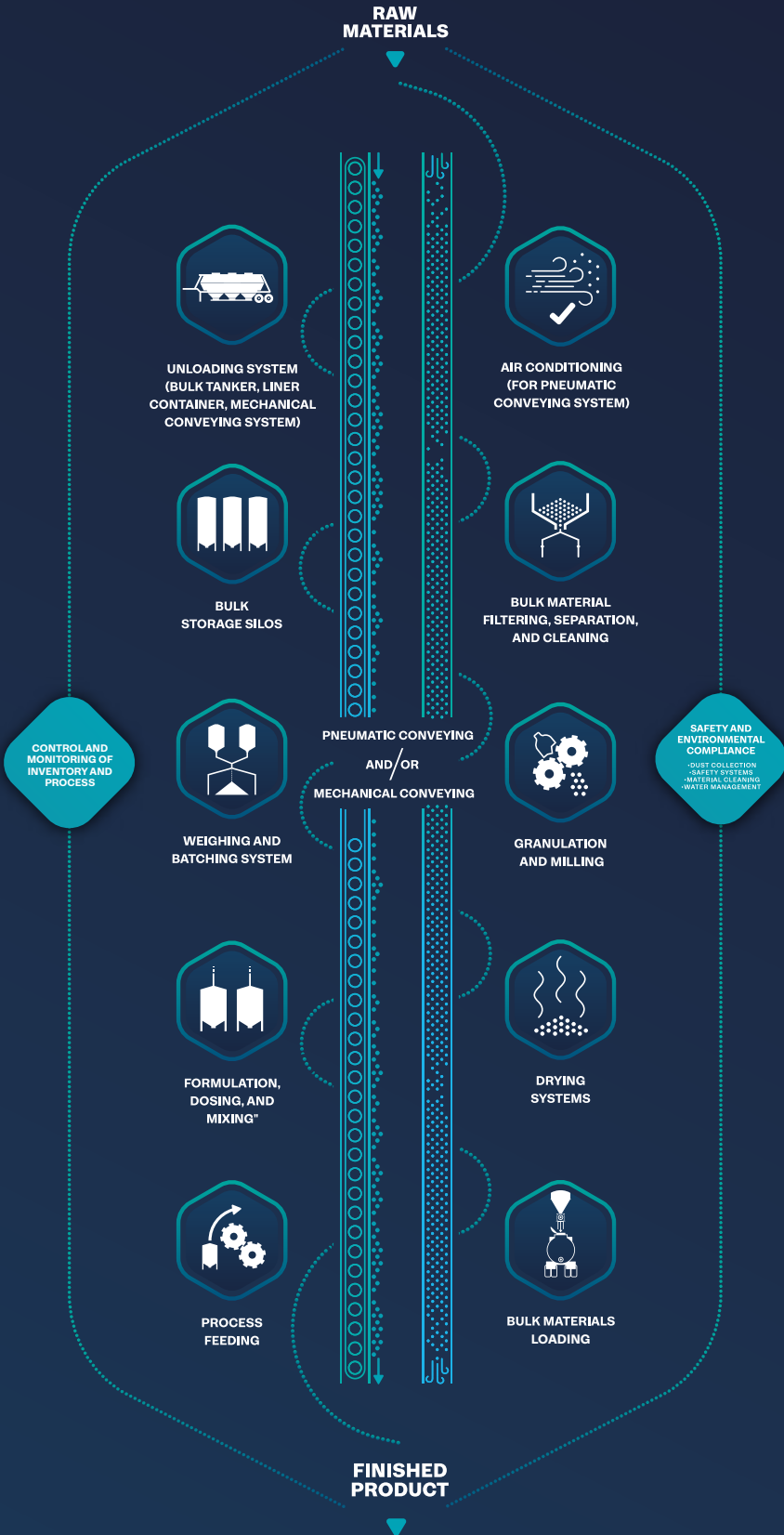
**KAB**

6T / 12T / 18T



SYCSA<sup>®</sup> AUTHORIZED REPRESENTATIVE

## BULK MATERIAL HANDLING SOLUTIONS



We just don't sell you a product

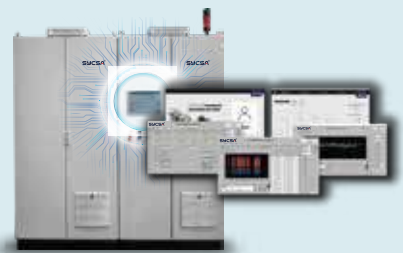
**SYCSA®** accompanies you through *all the phases* of your project



**DESIGN**



**INSTALLATION**



**AUTOMATION**

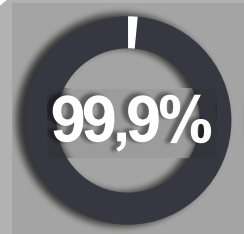


**BEFORE | AFTER**

**AFTER-SALES SERVICE**



9 INCH HMI WEINTEK DISPLAY / PANTALLA HMI WEINTEK 9 PULG



**OPTIONAL EQUIPMENT / EQUIPAMIENTO OPCIONAL**

- CONVEYOR BELTS / CINTAS TRANSPORTADORAS
- PALLET STACKER / APILADOR DE PALLETS
- COMPACTED BASKET / CANASTO DE COMPACTADO



Complies with quality standards.  
*Cumple con estándares de calidad.*



Production increases.  
*Aumenta la producción.*



99,9% emptying of sack content.  
*99,9% de vaciado de contenido de bolsa.*

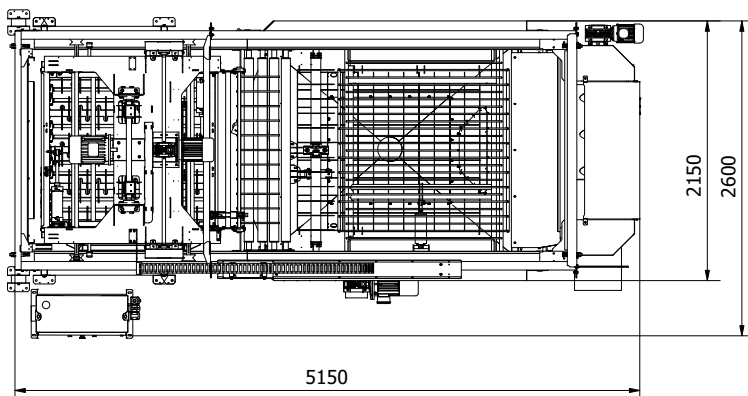
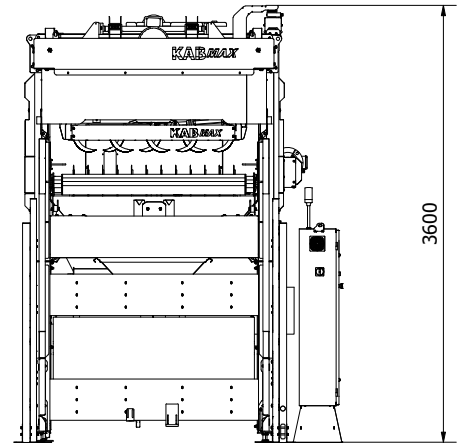
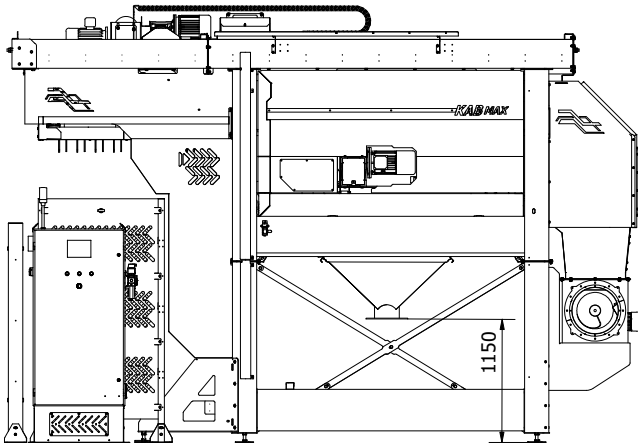


Reduces employee cost and risk of injury  
*Reduce costo de empleados y riesgos de lesiones.*





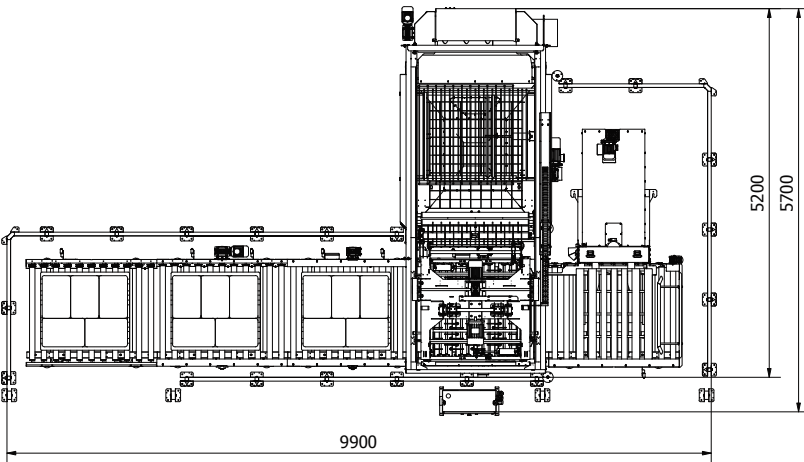
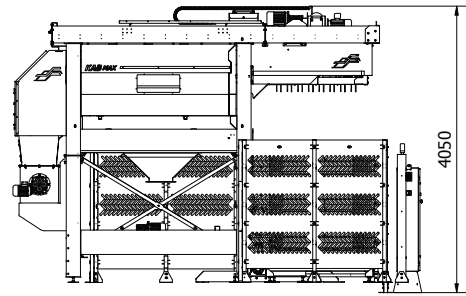
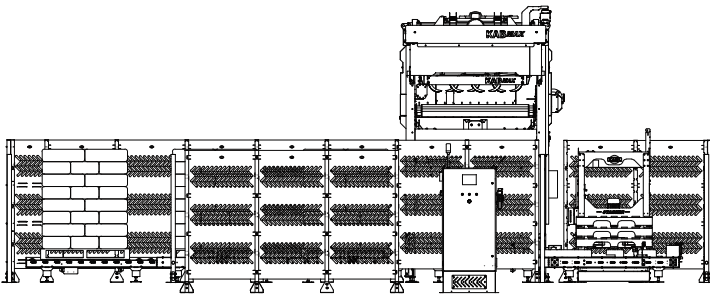
|   | 6T        | 12T/18T       |
|---|-----------|---------------|
| ENERGY CONSUMPTION / CONSUMO DE ENERGIA KAB MAX             | 9 KW      | 12 KW / 15 KW |
| ENERGY CONSUMPTION / CONSUMO DE ENERGIA KAB MAX + ADITIONAL | 17 KW     | 20 KW / 23 KW |
| AIR CONSUMPTION / CONSUMO DE AIRE                           | 150 l/min |               |
| AIR PRESSURE / PRESIÓN DE AIRE                              | 8 bar     |               |
| WIDTH / ANCHO   | 2280mm    |               |
| LENGTH / LARGO  | 5150mm    |               |
| HEIGHT / ALTO   | 3600mm    |               |
| WEIGHT / PESO   | 2600 Kg   |               |





PATENTED

ALL RIGHTS RESERVED





## LOADING AND UNLOADING EQUIPMENT

- Liners loading and unloading systems
- Railroad loading system
- Truck loading system (telescopic spouts) (loading bellows)
- Pumping system and preparation tank
- Reclaim system and sweep
- Manual or automatic bag opener
- Manual or automatic big bag unloaders
- Manual or automatic big bag loaders
- Bagging machine
- Palletizer

## STORAGE

- Bolted silo
- Welded silo
- Water tank
- Silos and pressurized vessels
- Hopper
- Fabric silo

## MATERIAL FILTERING AND CLEANING

- Venting filters
- Filter receiver
- Dust collectors
- Magnetic Separation and Metal Detection
- Non-ferrous material detectors
- Gravity and in-line screens
- Lump breaker
- Pellet deduster (fine separator)

## SECURITY SYSTEMS

- Lightning protection system
- Vacuum and pressure relief valves
- Explosion vent
- Explosion isolation safety valve
- Flameless venting
- Temperature, pressure and humidity monitoring and control system
- Silo or hopper overfilling systems
- Truck unloading locking system
- Metal detector
- Explosion isolation systems

## PNEUMATIC CONVEYING

- Dilute phase conveying
- Dense phase conveying
- Blowers
- Blower packages
- Dense phase pneumatic vessel
- Dilute phase pneumatic vessel
- Vacuum and pressure pneumatic vessel
- Aero-slide conveyors

## MECHANICAL CONVEYING

- Bucket elevator
- Screw conveyors & feeders
- Belt conveyor
- Drag conveyor
- Tubular cable & disc conveyor
- Discharge feeders (electromechanics and electromagnetics)
- Vibrating elevators

## MIXING

- Centrifugal batch mixer
- Planetary mixer
- Single and double paddle mixer
- Sludge mixer
- Gravimetric mixer for plastic
- PVC mixer (mixing and cooling)
- Container mixer

## DOSING AND MACHINE FEEDING

- Volumetric feeders
- Gravimetric feeders
- Additives or pigment dosing system
- Minor ingredients dosing system

## VALVES

- Slide valve
- Diverter valve
- Gravity diverter valve
- Multipoint diverter valve
- Butterfly valve
- Iris valve
- Rotary valve for pneumatic conveying
- Rotary valve for dosing and locking
- Pinch valve
- Check valve

## CONVEY LINE COMPONENTS

- Vacuum wands and sight glasses
- Gaskets
- Pipe or tubing and bends
- Tees, wyes, laterals, reductions and connections
- Cam and groove and quickie assemblies
- PVC and metallic hoses
- Pneumatic conveying manifold
- Take Off boxes

## EQUIPMENT FOR EFFICIENT UNLOADING OF SILOS AND HOPPERS

- Bin activators
- Reclaim system & sweep conical and flat bottom
- Aeration systems
- Mechanical extractors
- Agitators
- Arch-breaker discharge & screw feeder
- Aeration bin bottoms

## AUTOMATION CONTROL PANELS

- Industrial control panel
- Power panel & Control
- Remote monitoring panel
- Inventorying & control systems

## MONITORING AND TRACEABILITY SYSTEMS

- Weighing silos and hoppers
- On-line weighing system
- Traceability and control systems
- Load cells
- Truck and railroad scales
- Solid and liquid level measurement
- Point level sensors
- Silos and tanks level sensors
- Liquids tanks level monitoring
- Energy monitoring and optimization
- Process optimization algorithms
- Process data historian

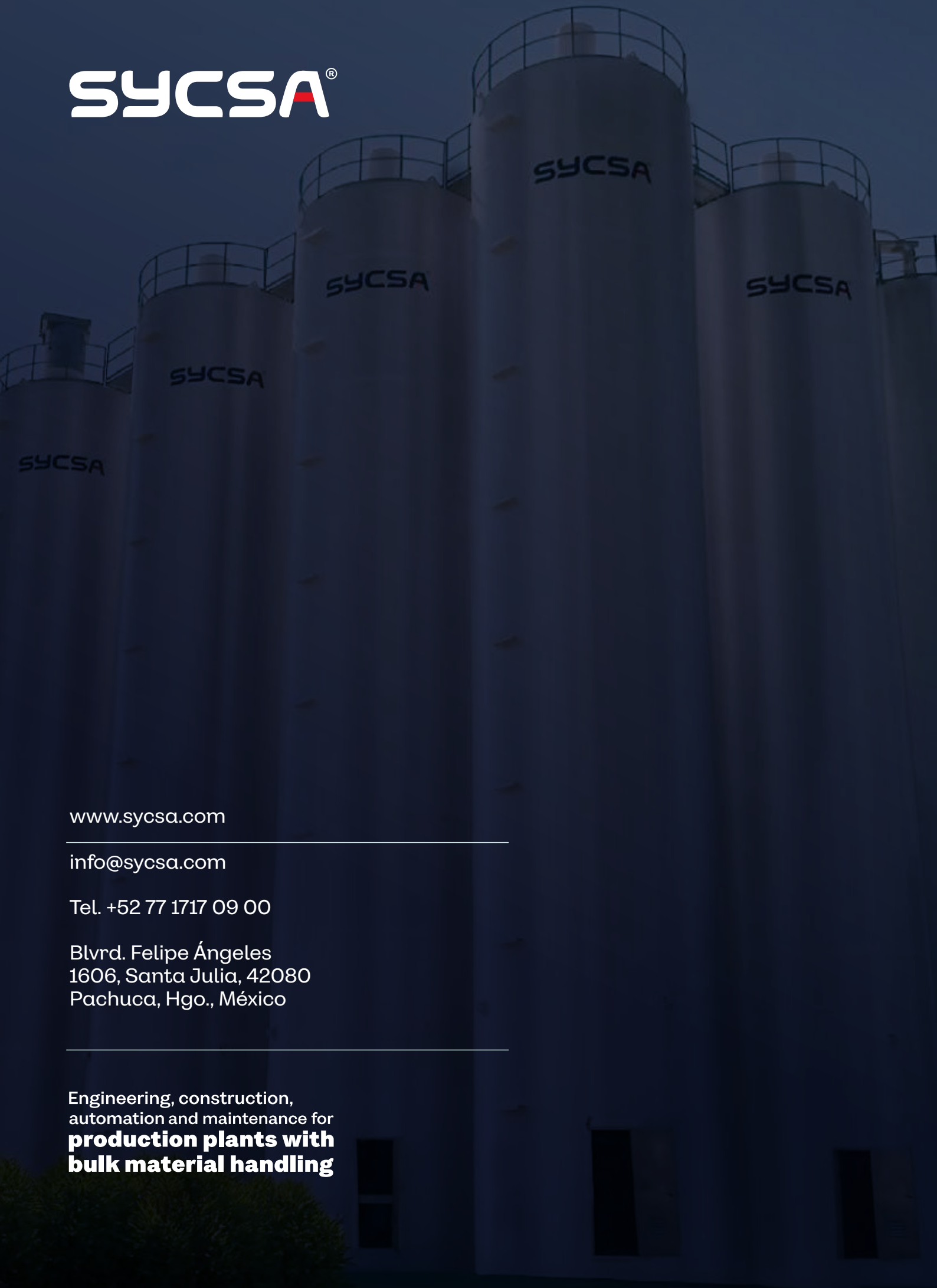
## COMPLEMENTARY EQUIPMENT

- Self-contained vacuum loader
- Compressed air material loaders
- Air to air heat exchangers; for conveying air
- Gas cooling/heating
- PET crystallizing
- Deshumidifiers
- Drying & dehumidifying
- Central vacuum receivers
- Granulators
- Lump breaker
- Pneumatic vibrator
- Electric vibrator





SYCSA®



[www.sycsa.com](http://www.sycsa.com)

---

[info@sycsa.com](mailto:info@sycsa.com)

Tel. +52 77 1717 09 00

Blvrd. Felipe Ángeles  
1606, Santa Julia, 42080  
Pachuca, Hgo., México

---

Engineering, construction,  
automation and maintenance for  
**production plants with  
bulk material handling**