

SYCSA®



Gravimix

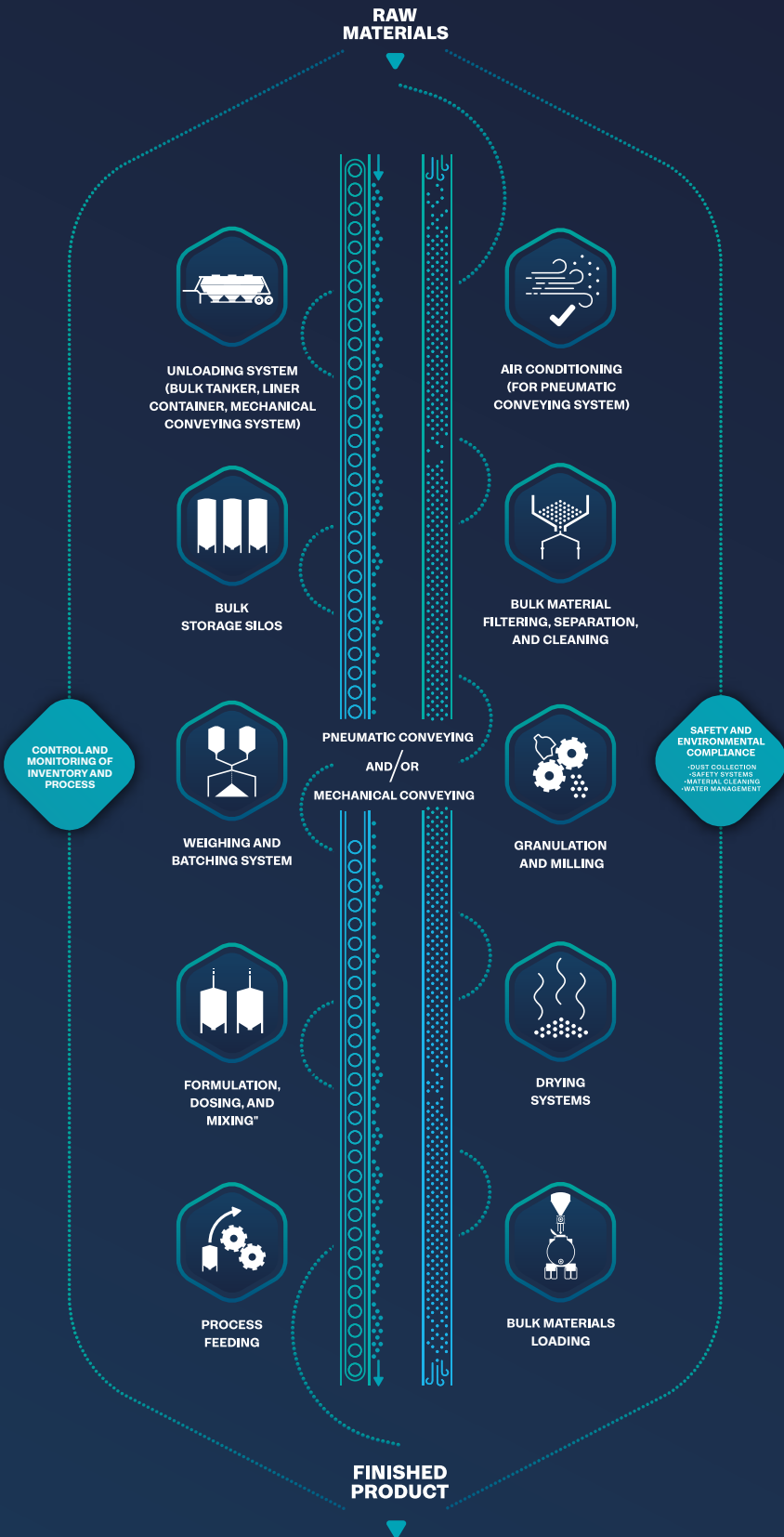
Ferlin

SYCSA® AUTHORIZED REPRESENTATIVE

BULK MATERIAL HANDLING SOLUTIONS

We just don't sell you a product

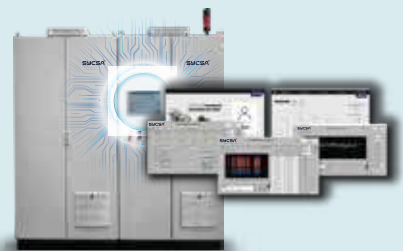
SYCSA® accompanies you through *all the phases* of your project



DESIGN



INSTALLATION



AUTOMATION



AFTER-SALES SERVICE

**IMPROVING
PLASTICS TOGETHER**

Ferlin

PRODUCT GUIDE

SYCSA[®]

AUTHORIZED
REPRESENTATIVE

Ferlin

GRAVIMIX 

DISCOVER THE POWER OF
**THE FERLIN GRAVIMIX:
SAVE FAST, EARN FASTER**

> With its low purchase cost and significant savings on additives, the GRAVIMIX is often paid off within three months. This allows a high return on investment (ROI). The GRAVIMIX is a wise investment for companies and enhances profitability.

Cost-Conscious

The GRAVIMIX is developed with cost in mind. For every euro that we ask for our GRAVIMIX, the customer should experience it in terms of reliability, accuracy, ease of use, or integrability. This ensures that the GRAVIMIX offers the best price-quality ratio.

Save on Additives

Thanks to the accuracy of the GRAVIMIX in measuring and weighing components, savings on additives is achieved. We regularly benchmark the GRAVIMIX and are proud of a standard deviation of just 0.01%, unmatched in the market.

Quick Return on Investment

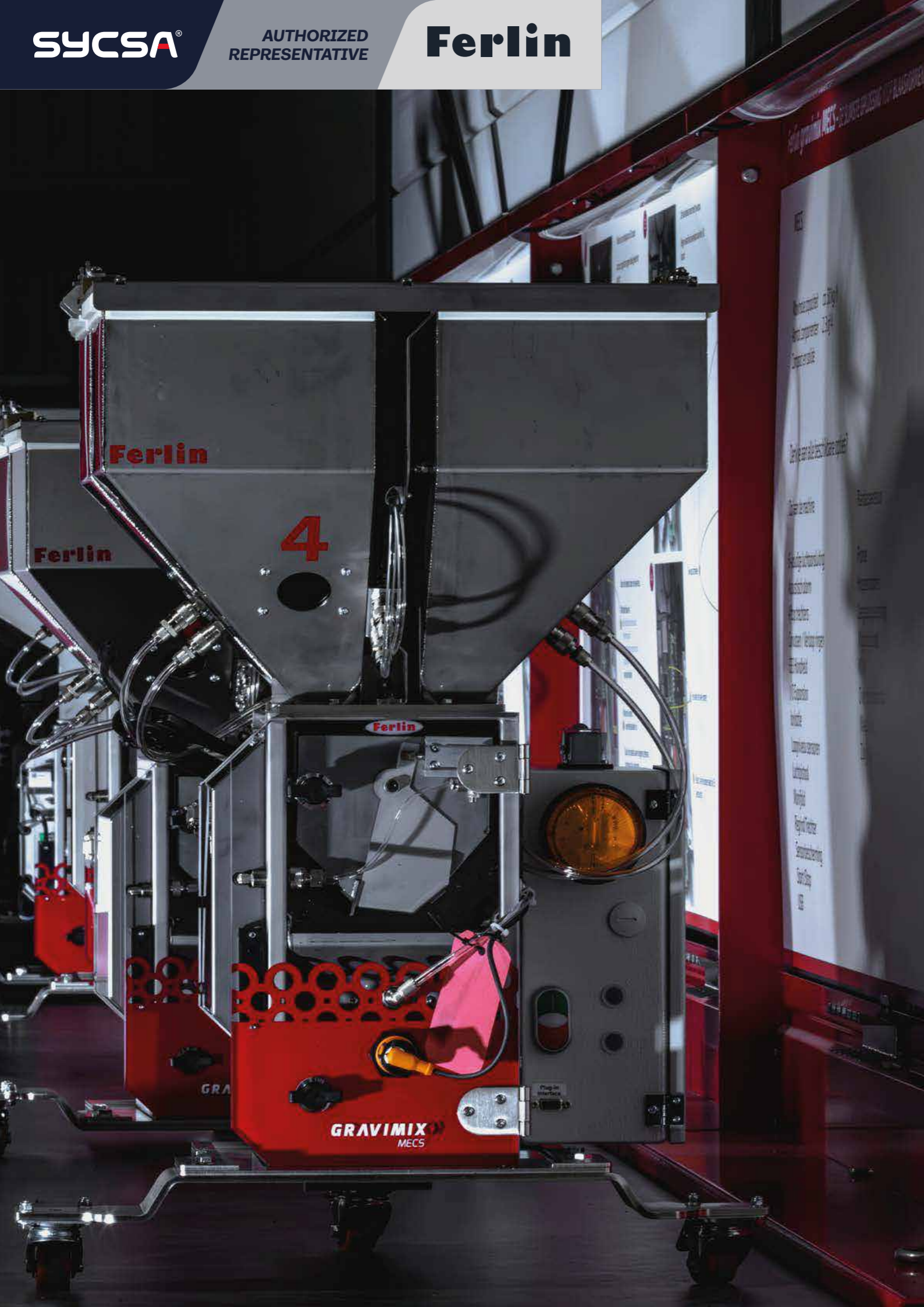
The GRAVIMIX stands out by its favorable cost and rapid ROI. Through our cost-conscious development, the purchase price of the GRAVIMIX remains low. It's precision ensures that significant savings on additives often lead to customers seeing a return on their investment within three months.

Advantages of the GRAVIMIX

The ease of use makes the GRAVIMIX popular among its users. The freely accessible data is frequently used for optimization or integration. The backwards-compatible developments, along with excellent service, make an almost infinite lifespan possible.

FREE TRIAL

Experience the benefits yourself and start saving and earning with the GRAVIMIX today. Request a free demo and discover the advantages yourself.



UNMATCHED QUALITY:

THE HALLMARK OF THE GRAVIMIX

➤ The GRAVIMIX demonstrates our commitment to quality through a meticulous mix of standardized production processes, decades of experience, and high-quality materials. This ensures that the GRAVIMIX not only meets but even exceeds customer expectations and industry standards.

Standardization and Experience

Our advanced standardization streamlines the production process for consistent and reliable GRAVIMIX machines. In this way, we ensure the quality of the GRAVIMIX and are able to grow along with the ambitions of our clients.

Durability and High-Quality Materials

We carefully select and test materials to guarantee the durability and performance of each GRAVIMIX. Additionally, we aim to develop as much as possible to be backwards compatible. This combination ensures that the very first GRAVIMIX, installed in 1992, still serves our customer today.

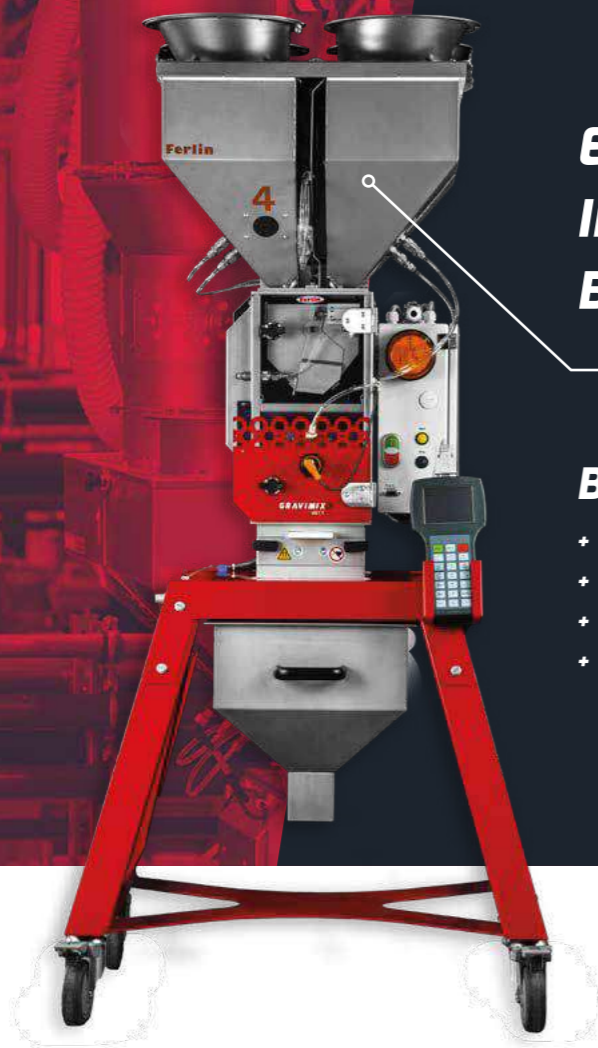
Latest Technologies

We embrace the latest technologies to add innovative features to the GRAVIMIX, thereby enhancing performance and user-friendliness to meet the needs of today and the future.

Co-Development

We believe that co-development leads to even smarter solutions. Therefore, we listen closely to feedback on our GRAVIMIX and adjust it as needed. The GRAVIMIX has been developed over the past decades with and by our clients, making it seamlessly integrate into our clients' processes.

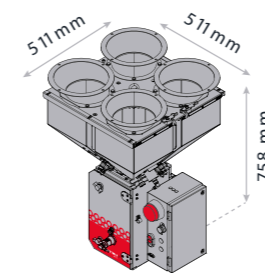




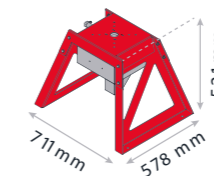
**EXTRUSION
INJECTION MOLDING
BLOW MOLDING**

Benefits

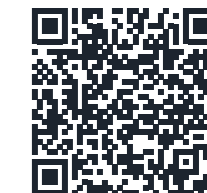
- + Number of components: 1 to 4
- + Extensive controls
- + Patented Easy Clean System
- + Option for MES/ERP/SCADA



MECS



MECS FRAME



SPECIFICATIONS

MORE PRODUCT INFORMATION?

SCAN THE QR-CODE



Batch weight	kg	0,7
Number of components	max.	4
Hopper capacity	litre	7
Mixing chamber capacity	litre	3,2
Supply voltage	V/Hz	240, 50/60
Power consumption	kW	0,05
Compressed air	Bar	6
Compressed air consumption approx.	NI/h	60
Weight approx.	kg	35

OPTIONS

- | | |
|----------------------------------|-----------------------------|
| • High temperature version (PET) | • Low-level sensors hoppers |
| • Ionization in mixing chamber | • Removable hoppers |
| • Agitator | • Economical operation |
| • Regrind hopper | • FerlinBridge |
| • Regrind control | • Regrind/regrind solutions |
| • Additive-to-regrind control | • Hopper emptying |
| • Pneumatic vibrator | • Acoustic alarm |
| • Start/stop button | • Drying function |
| • Air pressure gun | • MOVAC connections |

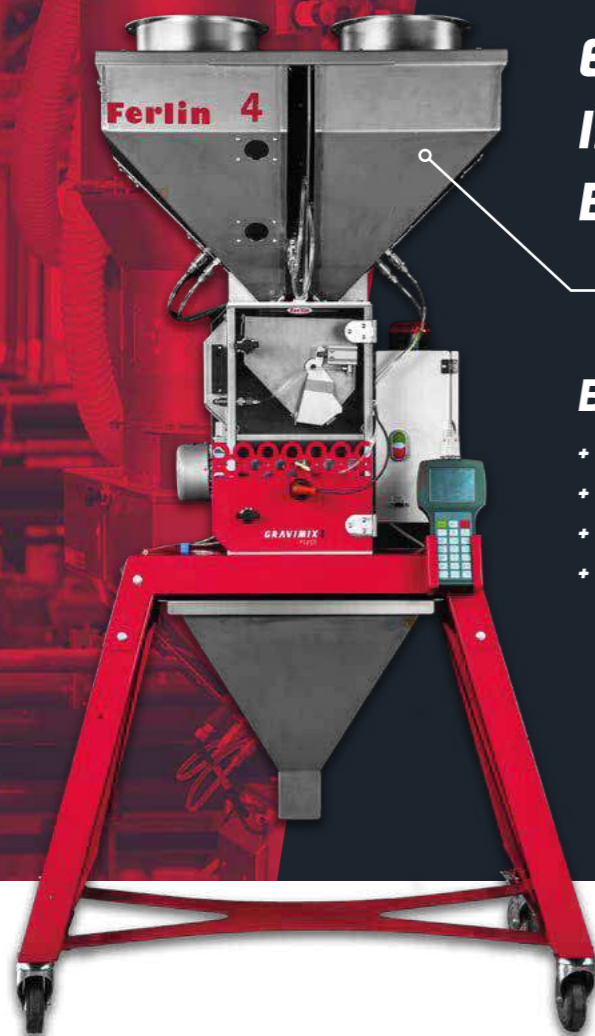
EXECUTIONS

WANT TO SEE MORE VERSIONS?

SCAN THE QR-CODE



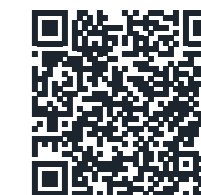
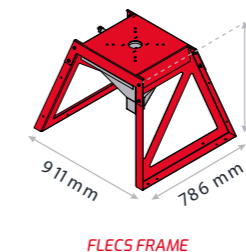
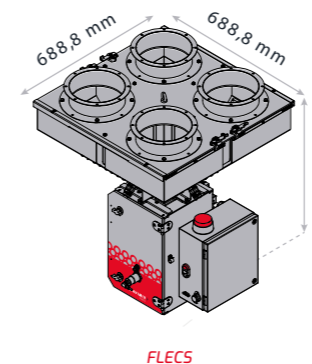
TYPES	CAPACITY (kg/H)	COMPONENTS	REGRIND/FLAKE
MECS 0/2	100	2	0
MECS 1/1	130	2	1
MECS 2/0	130	2	2
MECS 0/3	90	3	0
MECS 1/2	120	3	1
MECS 2/1	120	3	2
MECS 3/0	120	3	3
MECS 1/3	110	4	1
MECS 2/2	110	4	2
MECS 3/1	110	4	3



**EXTRUSION
INJECTION MOLDING
BLOW MOLDING**

Benefits

- + Number of components: 1 to 6
- + Extensive controls
- + Patented Easy Clean System
- + Option for MES/ERP/SCADA



SPECIFICATIONS

MORE PRODUCT INFORMATION? [SCAN THE QR-CODE](#)

Batch weight	kg	1,8
Number of components	max.	6
Hopper capacity	litre	18
Mixing chamber capacity	litre	7
Supply voltage	V/Hz	240, 50/60
Power consumption	kW	0,2
Compressed air	Bar	6
Compressed air consumption approx.	NI/h	60
Weight approx.	kg	60

OPTIONS

- High temperature version (PET)
- Ionization in mixing chamber
- Agitator
- Regrind hopper
- Regrind control
- Additive-to-regrind control
- Pneumatic vibrator
- Start/stop button
- Air pressure gun
- Low-level sensors hoppers
- Removable hoppers
- Economical operation
- FerlinBridge
- Regrind/regrind solutions
- Hopper emptying
- Acoustic alarm
- Drying function
- MOVAC connections

EXECUTIONS

WANT TO SEE MORE VERSIONS? [SCAN THE QR-CODE](#)

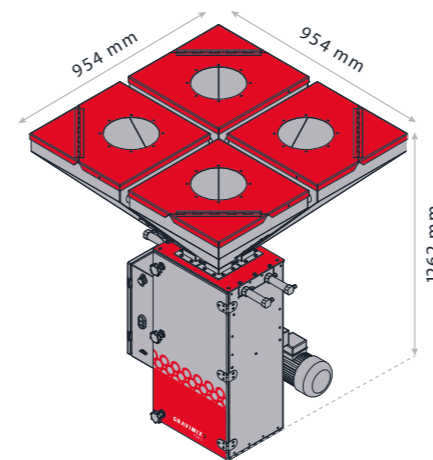
TYPES	CAPACITY (kg/H)	COMPONENTS	REGRIND/FLAKE
FLECS 1/1	300	2	1
FLECS 1/2	275	3	1
FLECS 2/1	275	3	2
FLECS 1/3	250	4	1
FLECS 2/2	250	4	2
FLECS 3/1	250	4	3
FLECS 3/0/2	225	5	3
FLECS 1/1/4	200	6	1
FLECS 2/0/4	200	6	2



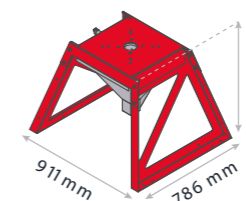
**EXTRUSION
INJECTION MOLDING
BLOW MOLDING**

Benefits

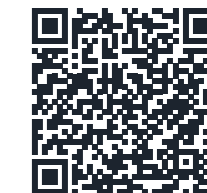
- + Number of components: 1 to 8
- + Extensive controls
- + Option for MES/ERP/SCADA



FGB 5



FGB 5 FRAME



SPECIFICATIONS

MORE PRODUCT INFORMATION?



Batch weight	kg	5,7
Number of components	max.	8
Hopper capacity	litre	48
Mixing chamber capacity	litre	20
Supply voltage	V/Hz	400, 5 0/60 (3P+N+E)
Power consumption	kW	0,3
Compressed air	Bar	6
Compressed air consumption approx.	NI/h	60
Weight approx.	kg	80

OPTIONS

• High temperature version (PET)	• Low-level sensors hoppers
• Ionization in mixing chamber	• Removable hoppers
• Agitator	• Economical operation
• Regrind hopper	• FerlinBridge
• Regrind control	• Regrind/regrind solutions
• Additive-to-regrind control	• Hopper emptying
• Pneumatic vibrator	• Acoustic alarm
• Start/stop button	• Drying function
• Air pressure gun	• MOVAC connections

EXECUTIONS

WANT TO SEE MORE VERSIONS?



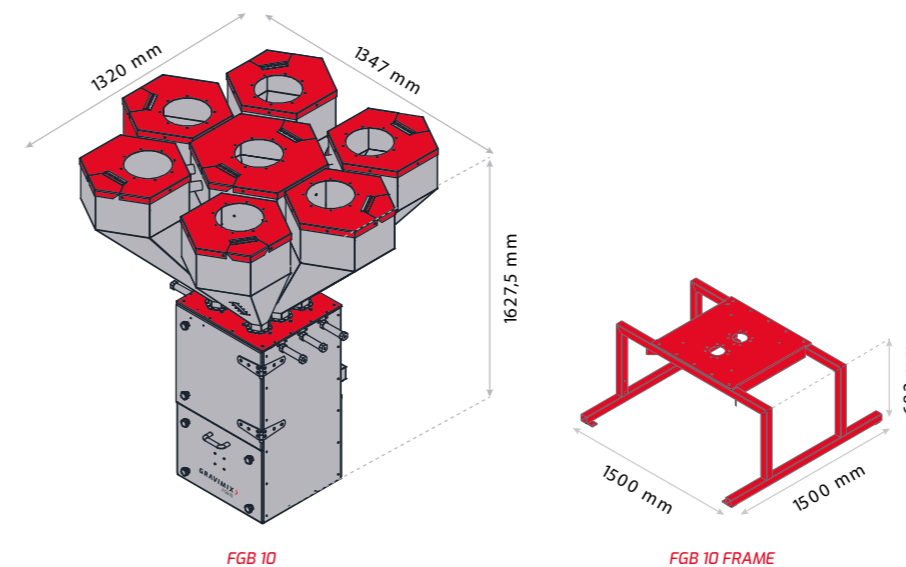
TYPES	CAPACITY (kg/H)	REMOVABLE HOPPERS	COMPONENTS
FGB 520	1100	0	2
FGB 530	1000	0	3
FGB 540	900	0	4
FGB 550	800	0	5
FGB 560	700	6	6
FGB 580	600	0	8
FGB 521	1000	1	3
FGB 522	900	2	4



EXTRUSION INJECTION MOLDING BLOW MOLDING

Benefits

- + Number of components: 1 to 7
- + Extensive controls
- + Option for MES/ERP/SCADA



SPECIFICATIONS

MORE PRODUCT INFORMATION?

SCAN THE QR-CODE

Batch weight	kg	10
Number of components	max.	7
Hopper capacity	litre	87
Mixing chamber capacity	litre	55
Supply voltage	V/Hz	400, 50/60 (3P+N+E)
Power consumption	kW	0,6
Compressed air	Bar	6
Compressed air consumption approx.	l/min	250
Weight approx.	kg	300

OPTIONS

- High temperature version (PET)
- Ionization in mixing chamber
- Agitator
- Regrind hopper
- Regrind control
- Additive-to-regrind control
- Pneumatic vibrator
- Start/stop button
- Air pressure gun
- Low-level sensors hoppers
- Removable hoppers
- Economical operation
- FerlinBridge
- Regrind/regrind solutions
- Hopper emptying
- Acoustic alarm
- Drying function
- MOVAC connections

EXECUTIONS

WANT TO SEE MORE VERSIONS?

SCAN THE QR-CODE

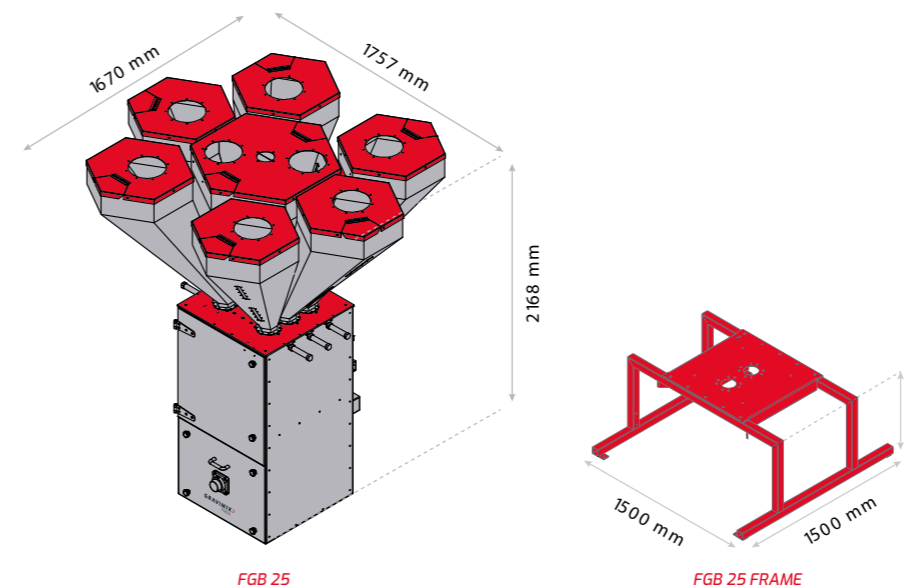
TYPES	CAPACITY (kg/H)	COMPONENTS
FGB 10-2	2000	2
FGB 10-3	1750	3
FGB 10-4	1550	4
FGB 10-5	1400	5
FGB 10-6	1300	6
FGB 10-7	1200	7



**EXTRUSION
INJECTION MOLDING
BLOW MOLDING**

Benefits

- + Number of components: 1 to 8
- + Extensive controls
- + Option for MES/ERP/SCADA



SPECIFICATIONS

MORE PRODUCT INFORMATION? [SCAN THE QR-CODE](#)

Batch weight	kg	25
Number of components	max.	8
Hopper capacity	litre	190 (of 2 x 95)
Mixing chamber capacity	litre	99
Supply voltage	V/Hz	400, 50/60 (3P+N+E)
Power consumption	kW	0,8
Compressed air	Bar	6
Compressed air consumption approx.	l/min	250
Weight approx.	kg	400

OPTIONS

• High temperature version (PET)	• Low-level sensors hoppers
• Ionization in mixing chamber	• Removable hoppers
• Agitator	• Economical operation
• Regrind hopper	• FerlinBridge
• Regrind control	• Regrind/regrind solutions
• Additive-to-regrind control	• Hopper emptying
• Pneumatic vibrator	• Acoustic alarm
• Start/stop button	• Drying function
• Air pressure gun	• MOVAC connections

EXECUTIONS

WANT TO SEE MORE VERSIONS? [SCAN THE QR-CODE](#)

TYPES	CAPACITY (kg/H)	COMPONENTS
FGB 25-2/0	3210	2
FGB 25-3/0	2800	3
FGB 25-4/0	2725	4
FGB 25-5/0	2300	5
FGB 25-6/0	2100	6
FGB 25-7/0	1950	7
FGB 25-8/0	1800	8

LOADING AND UNLOADING EQUIPMENT

- Liners loading and unloading systems
- Railroad loading system
- Truck loading system (telescopic spouts) (loading bellows)
- Pumping system and preparation tank
- Reclaim system and sweep
- Manual or automatic bag opener
- Manual or automatic big bag unloaders
- Manual or automatic big bag loaders
- Bagging machine
- Palletizer

STORAGE

- Bolted silo
- Welded silo
- Water tank
- Silos and pressurized vessels
- Hopper
- Fabric silo

MATERIAL FILTERING AND CLEANING

- Venting filters
- Filter receiver
- Dust collectors
- Magnetic Separation and Metal Detection
- Non-ferrous material detectors
- Gravity and in-line screens
- Lump breaker
- Pellet deduster (fine separator)

SECURITY SYSTEMS

- Lightning protection system
- Vacuum and pressure relief valves
- Explosion vent
- Explosion isolation safety valve
- Flameless venting
- Temperature, pressure and humidity monitoring and control system
- Silo or hopper overfilling systems
- Truck unloading locking system
- Metal detector
- Explosion isolation systems

PNEUMATIC CONVEYING

- Dilute phase conveying
- Dense phase conveying
- Blowers
- Blower packages
- Dense phase pneumatic vessel
- Dilute phase pneumatic vessel
- Vacuum and pressure pneumatic vessel
- Aero-slide conveyors

MECHANICAL CONVEYING

- Bucket elevator
- Screw conveyors & feeders
- Belt conveyor
- Drag conveyor
- Tubular cable & disc conveyor
- Discharge feeders (electromechanics and electromagnetics)
- Vibrating elevators

MIXING

- Centrifugal batch mixer
- Planetary mixer
- Single and double paddle mixer
- Sludge mixer
- Gravimetric mixer for plastic
- PVC mixer (mixing and cooling)
- Container mixer

DOSING AND MACHINE FEEDING

- Volumetric feeders
- Gravimetric feeders
- Additives or pigment dosing system
- Minor ingredients dosing system

VALVES

- Slide valve
- Diverter valve
- Gravity diverter valve
- Multiport diverter valve
- Butterfly valve
- Iris valve
- Rotary valve for pneumatic conveying
- Rotary valve for dosing and locking
- Pinch valve
- Check valve

CONVEY LINE COMPONENTS

- Vacuum wands and sight glasses
- Gaskets
- Pipe or tubing and bends
- Tees, wyes, laterals, reductions and connections
- Cam and groove and quickie assemblies
- PVC and metallic hoses
- Pneumatic conveying manifold
- Take Off boxes

EQUIPMENT FOR EFFICIENT UNLOADING OF SILOS AND HOPPERS

- Bin activators
- Reclaim system & sweep conical and flat bottom
- Aeration systems
- Mechanical extractors
- Agitators
- Arch-breaker discharge & screw feeder
- Aeration bin bottoms

AUTOMATION CONTROL PANELS

- Industrial control panel
- Power panel & Control
- Remote monitoring panel
- Inventorying & control systems

MONITORING AND TRACEABILITY SYSTEMS

- Weighing silos and hoppers
- On-line weighing system
- Traceability and control systems
- Load cells
- Truck and railroad scales
- Solid and liquid level measurement
- Point level sensors
- Silos and tanks level sensors
- Liquids tanks level monitoring
- Energy monitoring and optimization
- Process optimization algorithms
- Process data historian

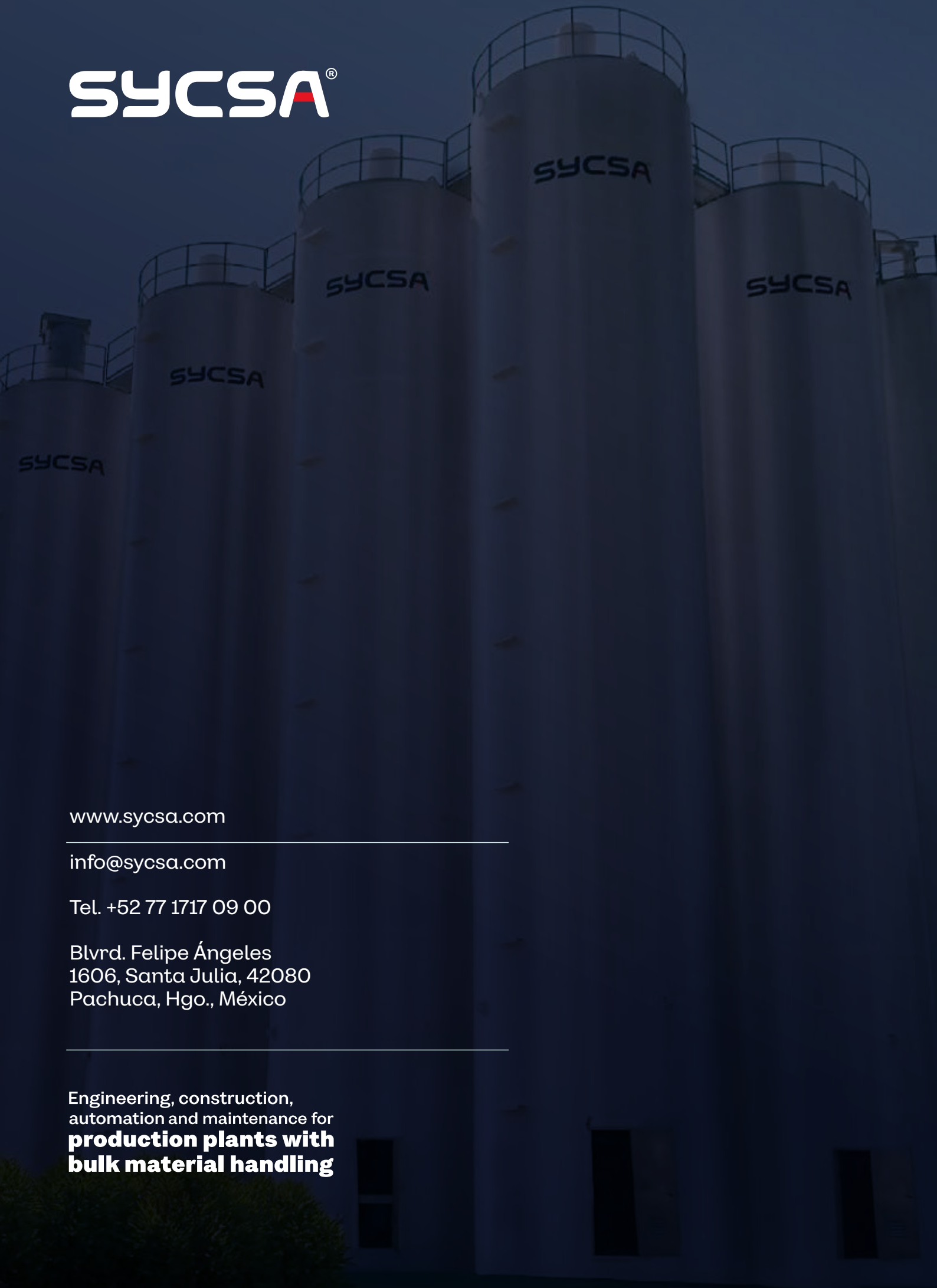
COMPLEMENTARY EQUIPMENT

- Self-contained vacuum loader
- Compressed air material loaders
- Air to air heat exchangers; for conveying air
- Gas cooling/heating
- PET crystallizing
- Deshumidifiers
- Drying & dehumidifying
- Central vacuum receivers
- Granulators
- Lump breaker
- Pneumatic vibrator
- Electric vibrator





SYCSA®



www.sycsa.com

info@sycsa.com

Tel. +52 77 1717 09 00

Blvrd. Felipe Ángeles
1606, Santa Julia, 42080
Pachuca, Hgo., México

Engineering, construction,
automation and maintenance for
**production plants with
bulk material handling**